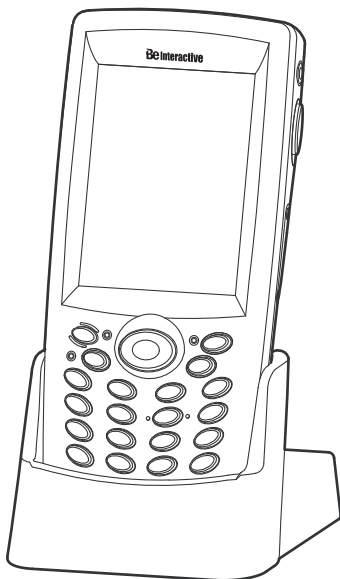


# **UD720** *Series*

## Quick Software Guide



 Microsoft  
**Windows CE 5.0**

**Be**  
interactive

**© Copyright 2007 by Be interactive Co., Ltd. Seoul, Korea**

This document and the information it contains is the property of Be interactive Co.,Ltd. is issued in strict confidence, and is not to be reproduced or copied, in whole or in part, except for the sole purpose of promoting the sale of Be interactive manufactured goods and services. Furthermore, this document is not to be used as a basis for design, manufacture, or sub-contract, or in any manner detrimental to the interests of Be interactive.

All trademarks are the property of their respective holders.

## Table Of Contents

### 1. SYSTEM Start-Up

1-1. Booting (Cold) . . . . .	4
1-2. Stylus coordinates correction . . . . .	4

### 2. Standard & Expansion Programs

2-1. Standard programs . . . . .	5
2-2. Expansion programs . . . . .	5
2-2-1. Wireless LAN program . . . . .	6
- Wireless LAN Setting up . . . . .	6
- IP Address Setting up . . . . .	7
2-2-2. Barcode scanner setting up . . . . .	8
- Barcode scanner setting up . . . . .	8
2-2-3. Scanner setting up (control panel) . . . . .	10
- Barcode reading setting up . . . . .	10
2-2-4. Recorder program . . . . .	11
- Recorder setting up . . . . .	11

### 3. Other Keypad Functions

3-1. Keypad functions . . . . .	12
- Vibration . . . . .	12
- Keypad Backlight . . . . .	12
- Keypad Lock . . . . .	12

## 1. SYSTEM Start-Up

### 1-1. Booting (Cold)

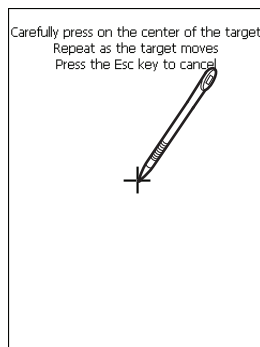
UD720 Series Insert the Battery push the power button beginning booting for operate UD720 Series picture 1. Booting is need for a short time make use of setting up UD720 Series.



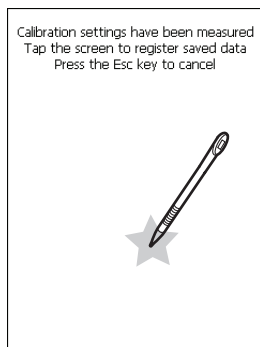
Picture 1. Cold booting

### 1-2. Stylus coordinates correction

Use stylus pen correct LCD touch screen properly on the LCD along the make "Cross(+)" after success click correctly one after the other, LCD click pass first screen.



Picture 2. Calibrating

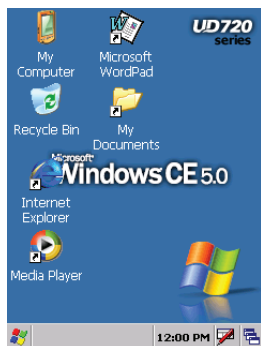


Picture 3. Calibration Registration

## 2. Standard & Expansion Programs

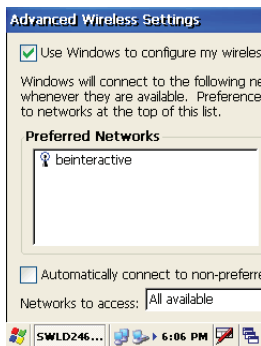
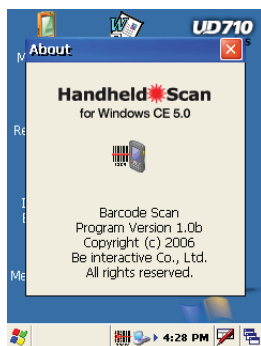
### 2-1. Standard programs

A basis O/S Windows CE 5.0 for business use Internet Explorer, media player, MS Word, Windows explorer, etc, installed application program, via active-sync add to system installation becoming program to system.



### 2-2. Expansion programs

In product built-in expansion program for each function except the program provided by Microsoft.



Expansion program can be provide separately use SDK.

## 2. Standard & Expansion Programs

### 2-2-1. Wireless LAN program

Not built-in with separate application program icon setting up direct contact program use hardware key.


#### - Wireless LAN Setting up

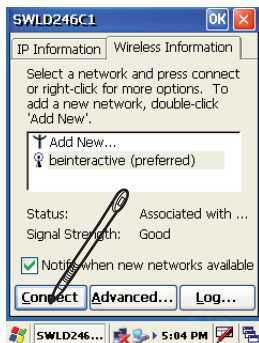
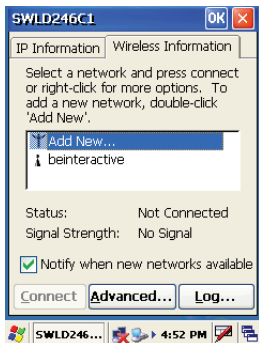
1. The bottom of product push Fn2 key and numeric key 6 button simultaneously.



#### Wireless LAN ON/OFF

Wireless lan is toggle key method use of ON/OFF button. Turning on Wireless lan if use internet push Fn2+3 button, turning off Wireless lan once again push Fn2+3 button after almost 3sec~4sec disappear icon on task Wireless lan auto off.

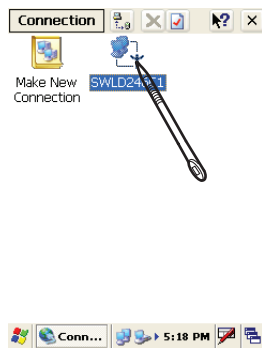
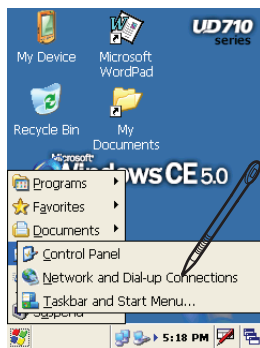
2. After almost 3sec~4sec appear  icon bottom of a screen task.
3. Task of bottom icon click call out wireless lan setting up screen.  
In wireless lan setting up screen top of screen, menu of two choose wireless information item.
4. select possible wireless lan AP name appear screen after choice make use of AP name push bottom of product "connect" button.
5. Choice use of AP on screen add to script "Basis setting up" before basis setting up internet connection via AP.



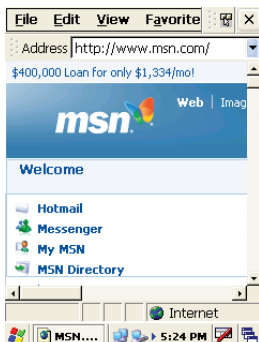
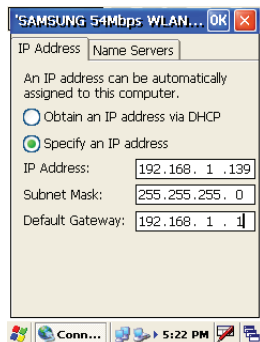
## 2. Standard & Expansion Programs

### - IP Address Setting up

1. Decide to wireless Access Point setting up IP address disassemble Access Point use for internet.
2. Located in the left bottom task click window mark select "Settings" -> "Network and Dial-up Connections"



3. Appear screen "SWLD 246C1" click IP address input one after the other.
4. After input IP address top of screen click OK button use for wireless lan apply to IP address value.
5. In task bottom if use possible icon, verify changed icon excute Internet Explorer.



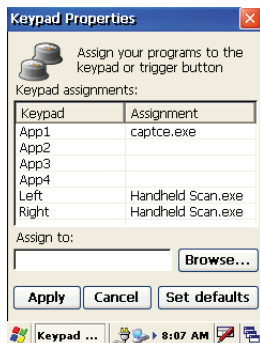
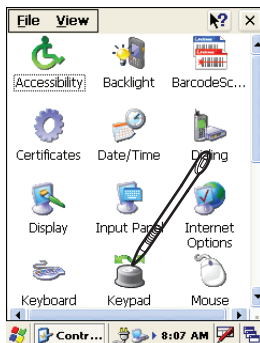
## 2. Standard & Expansion Programs

### 2-2-2. Barcode scanner setting up

Barcode scanner provide separate program, forwarding in manufactory setting up light and left trigger button.

#### - Barcode scanner setting up

1. After Bottom of screen click windows logo select "Settings" -> "control panel" -> click "keypad" setting up icon .



2. Bottom Left, Right Handheld Scan.exe setting up forwarding in manufactory, other button possible appoint application program.
3. No change forwarding in manufactory setting up out of push top of screen. Barcode scanner setting up Trigger Left, Right call push button program.



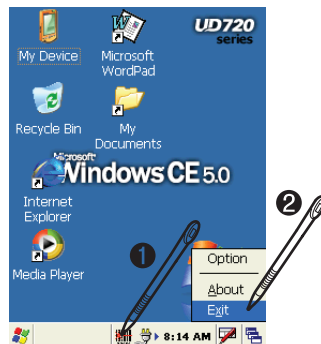
## 2. Standard & Expansion Programs

4. After a while handheld scan in bottom task appear barcode icon, on the screen no change.
5. Barcode scan program handheld scan process keypad message method confirm working existence and nonexistence use barcode because of sample program.
6. If verify barcode reading background screen after open "Wordpad" want towards barcode push left or light Trigger button launch laser beam.



### Barcode Scanner ON/OFF

Barcode scanner with operation OFF software. Turning up barcode scanner "Keyboard" setting up push be applied to key excute, Turning off barcode scanner click to barcode icon appear of pop up menu select Exit .



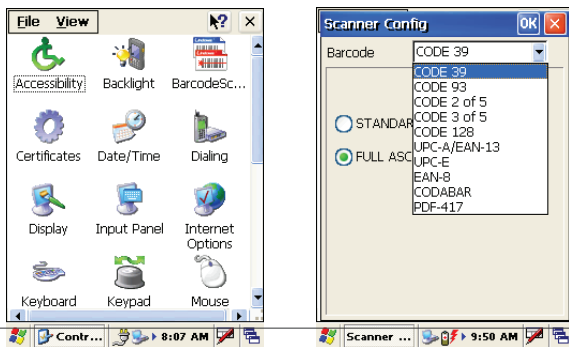
## 2. Standard & Expansion Programs

### 2-2-3. Scanner setting up (control panel)

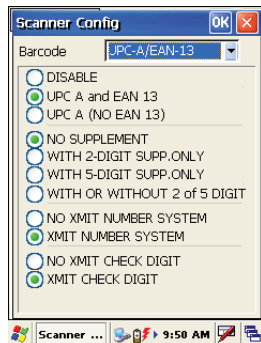
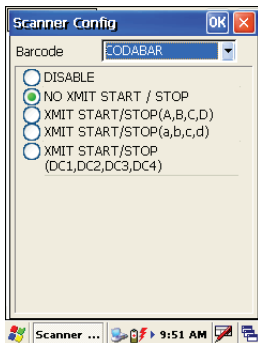
Mounting the product barcode scanner forwarding in manufactory basis barcode setting up reading, if read other barcode use of control panel setting up want read barcode.

#### - Barcode reading setting up

1. After click bottom windows logo select "settings"->"control panel" excute "scanner setting up" icon.



2. Kind of barcode use pull-down menu want read move the code.
3. Select of menu setting up value setting click to save top of screen push OK button.



Kind of barcode and use method different respective use setting up want barcode, and more barcode is useful setting up no use barcode management.

## 2. Standard & Expansion Programs

### 2-2-4. Recorder program

Recording function is use ear microphone include product package recording possible. In case of CDMA version ear microphone use talking, but and more product ear microphone use recording.

#### - Recorder setting up

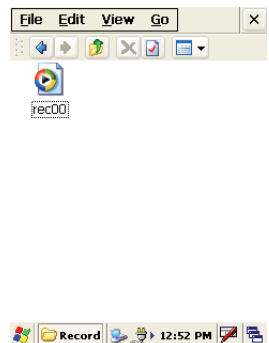
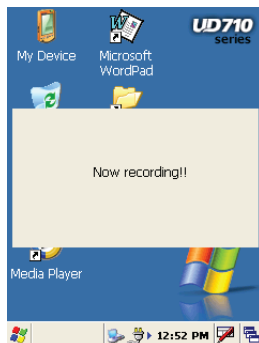
1. Remove top of product ear jack coverlet put a ear microphone.
2. Bottom key botton Fn2 + numeric key 8 button push simultaneously.



#### Recorder Start/Stop

Recording function is toggle key Fn2 + 8 button Start/stop toggle key use of Fn 2 + 8 button, till again push Fn2 + 8 button continued recording.

3. In screen appear "NOW Recording" start recording at this time in ear microphone recording sound.
4. Recording possible in a permitted limit built-in memory, storage and other directory recording file save function no setting up.
5. Finished recording again push Fn2 + 8 button finished recording.
6. Save the file built-in background screen "My Documents"-> "Record" in a save rec0000.wav, in case of recording increase count.



### 3. Other Keypad Functions

#### 3-1. Keypad functions

Not built-in with separate application program icon setting up direct contact program use hardware key.

##### - Vibration

1. Bottom key button Fn2 + numeric key 4 button push simultaneously.



##### Vibration ON/OFF

Vibration is toggle key method use of ON/OFF button. Turning on Vibration push Fn2+4 button, turning off this function once again push Fn2+4 button.

##### - Keypad Backlight

1. Bottom key button Fn2 + Bksp key button push simultaneously.



##### Keypad Backlight ON/OFF

Backlight is toggle key method use of ON/OFF button. Turning on backlight push Fn2+Bksp, turning off this function once again push Fn2+Bksp button.



##### - Keypad Lock

1. Bottom key button Fn2 + Home key button push simultaneously.



##### Keypad Lock ON/OFF

Keypad lock is toggle key method use of ON/OFF button. Turning on lock push Fn2+home button, turning off this function once again push Fn2+ home button.

## **Be Interactive**

You can contact Be interactive the follwing ways;

web : [www.beinteractive.co.kr](http://www.beinteractive.co.kr)

e-mail : [ud720@beinteractive.co.kr](mailto:ud720@beinteractive.co.kr)

Phone : 82-2-3281-6716

Fax : 82-2-3281-6719

